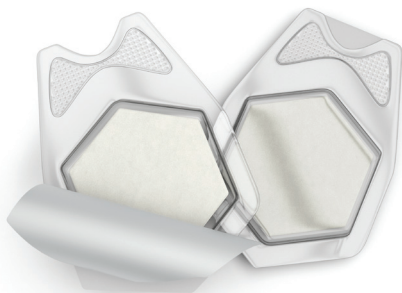


PROMOGRAN PRISMA™

Prior to applying PROMOGRAN PRISMA™, your healthcare provider will prepare the wound using standard wound care protocols which may include removal of any necrotic tissue by debridement.



Need to re-order more PROMOGRAN PRISMA™?

See below for a table of manufacturer item codes and available sizes.

PROMOGRAN PRISMA™				
HCPCS code	SKU	Size	Eaches/ UOM	UOM packaged
A6021	MA028	4.34 sq. in Hexagon	40	10 eaches/CT 4 CT/BX
A6022	MA123	19.1 sq. in Hexagon	40	10 eaches/CT 4 CT/BX

These are dressing application and removal guidelines for patient use. Please refer to the full instructions for use or consult a health care professional if you have any concerns about your dressing regime.

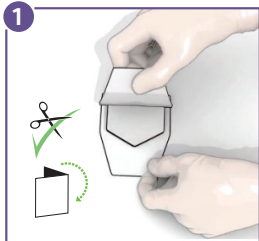


USER GUIDE

BEFORE APPLICATION

Refer to the instructions for use. Before application, necrotic tissue must first be removed by debridement. Prepare the wound according to appropriate wound management protocol. Remove the dressing from the box.

Dressing preparation



Opening the pouch

Peel back the tray cover and leave dressing in tray. If necessary, **PROMOGRAN PRISMA™** can be cut using clean scissors or folded to fit the wound bed.

Small or deep wound

For a small or deep exuding wound, cut the dressing prior to application or pack dressing into the wound.

Wet wound

If the wound bed is wet apply the dressing directly.

Dressing application



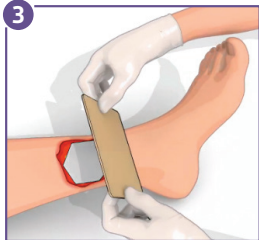
Dry wound

If the wound is dry moisten the dressing in the wound or in the tray.

Cover with a dressing such as a non-adherent contact layer like **ADAPTIC TOUCH™** or a foam dressing such as **TIELLE™**. Choose the secondary dressing based on the level of exudate.

Apply any cover or retention/compression bandage if required.

Secondary dressing application



Removal of secondary dressing

Carefully remove the secondary dressing.

It is not necessary to remove any residual **PROMOGRAN PRISMA™** dressing during dressing changes.

For more information, please contact Systagenix Customer Care **1.866.978.3296**